



NORTHWEST FLORIDA FAIR 4-H DIVISION



4-H is the exciting youth development program of the Florida Cooperative Extension. Membership is open to all youth ages 5-18.

4-H offers youth opportunities to acquire knowledge, develop skills, and form attitudes that will enable them to become self-directing, productive and contributing members of society.

4-H programs are offered in project and community clubs run by volunteers. If you would like to become a 4-H volunteer, please let us know! Training is provided. Members select projects from a wide variety of curriculum and work at their own pace.

4-H programs are also provided through school enrichment programs, camps, and special interest programs.

Summer camps are held at 4-H Camp Timpoochee located on the Choctawhatchee Bay near Niceville. Special project camps include Marine Camp and Horse Camp.

Lots of exciting things happen in 4-H! It is THE youth organization that can make a difference in your life!

4-H Clubs are organized and conducted by the members, parents and volunteer leaders who choose to belong. The major method used to organize and conduct the club is the group meetings - members can participate in the planning and carrying out of the 4-H club projects, activities and events. In turn, they will...

- Learn to make decisions
- Develop skills in group discussions
- Try new ideas and methods
- Develop citizenship and leadership skills
- Acquire new knowledge and skills
- Develop confidence in themselves
- Gain a sense of group pride
- Form a cooperative attitude

UNIVERSITY OF
FLORIDA
IFAS EXTENSION



The Okaloosa County Extension Service provides research, educational information and other services only to individuals and institutions that function without regard to race, color, sex, age, handicap or national origin. For persons with disabilities requiring special accommodations, please contact the Okaloosa Extension Office at least 5 working days prior to the program so that proper consideration may be given to the request.

YOUTH ACTIVITIES

Under the Direction of Okaloosa County 4-H Extension Agent

1. AGE REQUIREMENTS –
CLOVERBUD DIVISION – Must have reached their 5th birthday by September 1, 2011 and not passed their 8th birthday by September 1, 2011
JUNIOR DIVISION - Must have reached their 8th birthday before September 1, 2011 and had not passed their 11th birthday by September 1, 2011.
INTERMEDIATE – Must be 11 by September 1, 2011 and have not passed their 14th birthday by September 1, 2011.
SENIOR DIVISION - Must be 14 by September 1, 2011 and have not passed their 18th birthday or graduated from high school.
2. PRE-REGISTRATION - is required and should be turned into the county 4-H Office by October 3, 2011. NO ADDITIONS OR ALTERATIONS OF ENTRIES WILL BE ACCEPTED AFTER THE REGISTRATION DEADLINE.
3. REGISTRATION and JUDGING will be by number.
4. ARTICLES ENTERED must follow guidelines established. Items must have been made by youth in last year (since November 2010).
5. REMOVAL OF 4-H LIVESTOCK SHOW EXHIBITS MUST BE APPROVED BY THE FAIR EVENT COORDINATOR. Removal of exhibits without approval may cause forfeiture of premium money, and/or other awards.
6. REMOVAL OF ITEMS FROM FAIR shall be done Sunday after 6pm. All items must be removed by Tuesday, November 1. Removal of items before this time will cause forfeiture of premium money and/or other awards.
7. ALL REASONABLE CARE will be taken of exhibits; however the Okaloosa County Cooperative Extension Service or the Fair Association are NOT liable for damage, breakage, theft, etc.
8. UNSUITABLE EXHIBITS or exhibits of poor quality may be refused.

TIME SCHEDULE

Monday, October 3 - Pre-registration for all your entries due (4-H Fair Entries, Okaloosa Extension Service, 5479 Old Bethel Rd., Crestview, FL 32536-5512). Entry forms are available at <http://okaloosa.ifas.ufl.edu/4h.shtm> or <http://nwffair.com/4h.htm> or by contacting the 4-H Office.

Monday, October 24, 4:00-8:00 P.M. - All items to be judged must be brought to the Fairgrounds Extension Building. Be sure entry is officially checked in and recorded. DO NOT just set them down and leave.

Tuesday, October 25 - 9:30 a.m. JUDGING; 5:00 p.m. FAIR OPENS

Tuesday, October 25 – 6:00 p.m. POULTRY AND RABBIT SHOWMANSHIP

Thursday, October 27 – 5:30 p.m. GOAT SHOW

Saturday, October 29 – 3:30 p.m. CATTLE SHOWMANSHIP CLINIC

Sunday-Tuesday, October 30-November 2 - Remove exhibits from Fairgrounds.

4-H CLUB DEPARTMENT

PROJECT EXHIBITS

This department is open to all bona fide Okaloosa County 4-H members. Each 4-H member may enter up to 3 exhibits in each project area he/she is interested in. Items must have been made by 4-H'ers in the past year (since November 1, 2010).

Pre-registration is required and should be submitted by October 3 to the 4-H Office. Registration forms are available at the 4-H website or Fair website. No additions or alterations of entries will be accepted after the registration deadline. A 4-H project exhibit can be one or more items made in a 4-H project. It can also be a tabletop exhibit consisting of poster, handouts, etc. to depict what a 4-H'er is doing in a

project. Project areas are listed below. 4-H'ers are encouraged to develop individual ideas for project exhibits, using the project book as a guide.

4-H PROJECT EXHIBIT

PROJECT EXHIBITS MUST BE NO LARGER THAN 18" WIDE BY 18" TALL BY 18" DEEP. EXHIBITS THAT DO NOT FOLLOW SIZE LIMITATIONS WILL BE REFUSED. POSTERS ALONE ARE NOT CONSIDERED AN EXHIBIT.

All judging will be done by the Danish System. Each project display will be presented a ribbon and premium. There will be Special Merit Awards for 4-H exhibits that demonstrate especially outstanding efforts and excellent quality. However, no more than 5 of these awards will be available. Decisions of the judges will be final.

SCORECARD

1. Quality of workmanship and appearance of finished project display; proper size - 40 points
2. Neatness - 15 points
3. Draws emphasis to what has been learned in project, i.e. clothing construction... submit a garment appropriate for project level skills - 20 points
4. Appropriateness of display in relation to project area, i.e. a box of mounted seashells for Marine Science is inappropriate until they are properly categorized, labeled and shown according to the project manual - 25 points

TOTAL - 100 Points

4-H PROJECT PREMIUMS

BLUE RIBBON	\$ 8.00
RED RIBBON	\$ 6.00
WHITE RIBBON	\$ 4.00
HONORABLE MENTION	\$ 2.00
SPECIAL MERIT AWARD	\$10.00



CATEGORIES - 4-H EXHIBITS

1. Aquatic and Marine Environment - no live exhibit
2. Career Exploration, Citizenship and Leadership
3. Clothing
4. Companion Animal - no live exhibits
5. Consumer Education, Family Economics and Home Management
6. Earth Connections
 - A. Includes exhibits on interdependence of air, earth, soil and water; natural resources conservation and quality, soil science, geology, weather, atmosphere and the stars
7. Energy
8. Food and Nutrition (General)
 - A. Must not require refrigeration
 - B. Recipe must be included on 3" X 5" card
 - C. Foods will be judged on appearance, texture, flavor
 - D. Must be entered on disposable containers

- E. Quantity required: ½ cake, ½ pie, 1 doz. cookies, ½ loaf bread, ½ doz. biscuits, ½ doz. muffins
 - F. Food of any type may be entered but no highly perishable food will be accepted
 - G. No commercially prepared mixes may be used (Exception – Quick Breads Unit 1)
9. Food Science and Safety
- A. Includes exhibits regarding food safety topics and food science, such as vacuum packaging, food irradiation, pesticides, food additives and biotechnology in foods
 - B. Food Preservation Exhibit
 - 1) Must be packaged in standard canning jars
 - 2) No rings should be left on jars
 - 3) Recipe procedure must be included on 3" X 5" card
 - 4) Jar must be labeled with contents
 - 5) Pickles, preserves, jams, jellies, fruits, vegetables and meats may be entered
10. Forests and Other Terrestrial Environments
- A. Includes exhibits on forest ecosystems, forest conservation, wildlife management, entomology and beekeeping
 - B. No live exhibits
11. General Animal Science - no live exhibits
12. General Category
- A. Includes all exhibits **not** related to other categories listed
13. Health
14. Horse
15. Housing and Home Environment
16. Human Development
17. Leisure Arts/Recreation
- A. Includes all exhibits on leisure activities and recreation, including, shooting sports, areas of archery and riflery, music, arts & crafts, cake decorating, floral arranging, wood-working, and metal crafts
18. Mechanical and Electronic Science
19. Media Arts
- A. Includes exhibits on all phases of photography, graphic arts, computer graphics, CAD, video or other current technologies used for communication media
20. Petroleum Power and Small Engines
21. Plant Connections
- A. Includes all exhibits relating to production and marketing of fruits, vegetables, flowers, turf, ornamental, field crops and forage. landscaping, green houses, propagation soils, hanging baskets, bulbs, citrus and harvesting or processing crops
 - B. Gardening Project
 - 1) Harvested fruits and vegetables
 - 2) Each entry is to be composed of several items arranged in an attractive display; unusual or large specimens may be entered singly
 - C. Ornamental Project
 - 1) Specimens must be owned by member and been in his/her possession for at least three months
 - 2) Plants and flowers must be labeled with common and botanical name
 - 3) All plants must be in good condition. Containers should be covered for attractive display
 - 4) Exhibitors must leave written instructions with event chairman concerning special care of their exhibit
22. Safety
23. Veterinary Science
24. Waste Management
- A. Includes exhibits relating to the management of solid and hazardous waste such as reducing, reusing, recycling, litter control and composting as a recycling/waste management process
25. Photo Scrapbooking
- A. Youth can exhibit up to six (6) scrapbooking pages as one (1) exhibit

4-H CLUB BOOTHS

The purpose of the club booths is to depict a part of 4-H to non-4-H'ers and to the general public. **It must be in place by Monday, October 24, 2011, at 8:00 p.m.**

Each club will receive \$100.00 to help offset costs of exhibits.

THEME: Each club will select a theme for its booth. This must be submitted along with a sketched plan to the 4-H Office by October 3, 2011.

SIZE: The 4-H booth will be approximately 10' wide and 8' deep with a partial divider between booths. **Each of the booth's dimensions varies, and measuring is recommended.**

PREMIUMS

- 1st Place - \$80.00 - Blue Rosette
- 2nd Place - \$60.00 - Red Rosette
- 3rd Place - \$40.00 - White Rosette
- 4th Place - \$20.00 - Honorable Mention

SCORECARD

1. Uses effective caption on title sign - short, catchy, appropriate, well placed - 10 points
2. Draws attention, causes people to stop - 15 points
3. Arouses and holds interest, makes people stop long enough to read & study essentials of materials - 20 points
4. Has much educational value. Presents facts worth knowing and using in a way easy to remember - 25 points
5. Has pleasing appearance. Booth appropriately, conservatively and neatly decorated - 20 points
6. Uses explanatory material effectively - 10 points

TOTAL.....100 POINTS

GENERAL RULES AND REGULATIONS FOR LIVESTOCK EXHIBITORS

All exhibitors are cautioned to read carefully the following rules and regulations, as they will be enforced strictly, with no deviation.

Administration of Rules and Regulations

The Northwest Florida Fair Association and the Okaloosa Extension Service reserve the final and absolute right to interpret these rules and regulations and to arbitrarily settle and determine all matters, questions, and differences in regards thereto, or otherwise arising out of or connected with or incident to the Show, and right to amend or add to these rules as its judgment may determine. An exhibitor who

violates any of the following rules will forfeit all privileges and premiums and be subject to such penalty as the Northwest Florida Fair may order.

Statement of Liability

1. All livestock exhibits will be under the direction of the Northwest Florida Fair Association and the Okaloosa Extension Service, but the Northwest Florida Fair Association, University of Florida, Okaloosa Extension Service, its employees and volunteers, and the Okaloosa Board of County Commissioners, will in no case be responsible for any loss or damage that may occur. Each exhibitor will be solely responsible for any consequential or other loss, injury or damage done to, or occasioned by, or arising from, any animal or article exhibited by him/her and for its description as given in the catalog, and shall indemnify the Northwest Florida Fair Association, University of Florida, Okaloosa Extension Service, its employees and volunteers, and Okaloosa Board of County Commissioners, against all legal or other proceedings in regard thereto, as well as damage or injury to any other person or property, caused by the exhibitor, or any of the animals exhibited by him/her, or arising out of, or in any way connected with such exhibition of any of the animals so exhibited.
2. The Fair Management and Okaloosa Extension Service reserves the right to remove from the grounds any exhibit, animal, or fowl that may be falsely entered or may be deemed unsuitable or objectionable.
3. Each exhibitor (and exhibitor's parent or legal guardian) must sign the statement acknowledging that he/she understands and will abide by the liability requirements and rules and regulations of the Northwest Florida Fair and Okaloosa Extension Service. If the exhibitor does not sign this statement his/her application for entry will not be accepted.

4-H YOUTH POULTRY SHOW

EXHIBIT SCHEDULE

Fair Event Coordinator: Jennifer Bearden, 689-5850

Entry Deadline: October 3, 2011

Arrival Time & Veterinary Check in: Monday, October 24, 2011, 4:00-7:00 p.m.

Exhibit Judging: October 25, 2011, 9:30 a.m.

Showmanship: October 27, 2011, 6:00p.m.

Removal of Poultry: October 30, 2011, after 6 p.m. or October 31, 8:00-4:00 p.m.



PURPOSE

1. To use the poultry project as a tool in the total development of youth in 4-H. This is especially adapted to rural non-farm and urban situations.
2. To provide a learning experience in livestock production.
3. To develop an appreciation of livestock among 4-H youth who may not be able to handle other types of large animal projects.

RULES AND REGULATIONS

An Official Certificate of Veterinary Inspection is required for all poultry, domestic birds and ratites for movement into Florida and for exhibition at the Northwest Florida Fair. All poultry entered for exhibition must originate from Pullorum-Typhoid clean flocks or hatcheries, as defined in rule 5C-16.008, Florida Administrative Code, or have a negative Pullorum-Typhoid test within 90 days prior to exhibition. However, poultry, domestic birds and ratites may be presented for exhibition without an Official Certification of Veterinary Inspection if inspected as provided in 5C-4.001(4) by a representative from the Florida Department of Agriculture, Division of Poultry. A State Veterinarian will be present at the Northwest Florida Fair site to inspect all poultry for disease and test for Pullorum-Typhoid before birds will be caged. Poultry showing any signs of disease, testing positive for Pullorum-Typhoid, or having external parasites will not be accepted for exhibition.

Specific Authority 5C-4.004 FS

1. Poultry must be owned and in possession of the 4-H youth exhibitor at least 60 days prior to the date of the show.
2. Youth exhibitors must be bona fide 4-H members, and must have reached their 5th birthday by September 1 of the current year and not passed their 18th birthday or graduated from high school. Further, the exhibitor must reside in Florida panhandle and south Alabama Counties.
3. Poultry must be 6 months of age or older, and it is not recommended exhibiting birds older than 3 years or age depending on body condition and condition of plumage.
4. Each youth exhibitor may show up to three pairs of different chicken breeds, i.e. Plymouth Rocks, Polish, and Rhode Island Red. Each youth may show up to two pairs of other poultry or game birds.
5. Each pair will consist of one male and one female of the same breed or variety.
6. No entry fee is required.
7. Bring poultry entries to the Poultry Building located behind and to the left of the main fair buildings. Exhibitors must remain with their birds until veterinary examination has been conducted and birds are accepted for showing.
8. There is limited cage space in the Poultry Building, and 4-H exhibitors must pre-register listing how many pairs and the varieties they will be exhibiting. Due to the shortage of cage space, entries will be accepted on a first-come, first-serve basis.
9. Poultry will remain at the fairgrounds during the duration of the Fair. Poultry can be removed from the fair site Sunday, October 30, after 6 p.m. Removal prior to that time will cause forfeiture of premium money and/or other awards.
10. Feed and water for the poultry will be provided by the Okaloosa County 4-H
11. All animals must be clean and well groomed.
12. Be sure to bring healthy birds to the fair as they will be examined by the State Veterinarian. Birds with external parasites, displaying runny eyes or noses, sneezing or displaying other indications of illness or disease will not be accepted for showing. Bring Showmanship chickens, if different from Exhibition pairs to be tested as well.
13. All poultry will be tested for negative Pullorum-Typhoid before being caged and accepted for showing.
14. Poultry pairs will be judged by the standard of perfection as described in the "American Poultry Standard of Perfection" guidelines. There will be one Best Poultry Pair In Show awarded, receiving a premium, and rosette.
15. Showmanship will be divided into four classes:

5-7 years old	11-13 years old
8-10 ears old	14-18 years old
16. All decisions of the judge(s) will be final.
17. All Exhibitors are responsible for hosting the 4-H Barn during the fair week. Length of shift will be determined by the barn superintendent at fair-time. Length of shift depends on the number of exhibitors participating in the county fair.

EXHIBITION PREMIUMS

Blue Ribbon	\$10.00
Red Ribbon	\$ 5.00
White Ribbon	\$ 3.00
Honorable Mention	\$ 2.00
Best Standard Breed	\$15.00 and Rosette
Best Bantam Breed	\$15.00 and Rosette
Best Exotic Breed	\$15.00 and Rosette
Best Game Bird Breed	\$15.00 and Rosette
Best Miscellaneous Breed	\$15.00 and Rosette

Best Poultry Pair In Show Award \$20.00 and Rosette

SHOWMANSHIP PREMIUMS

Youth 5-7 years old - will receive a ribbon and \$3.00 premium for participation.

Youth 8-10, 11-13, and 14-18 years old - will receive show premiums and a ribbon for first through fifth place awards.

1st Place - \$5.00 and Ribbon
2nd Place - \$4.00 and Ribbon
3rd Place - \$3.00 and Ribbon
4th Place - \$2.00 and Ribbon
5th Place - \$1.00 and Ribbon

Showmanship Champion \$15.00 and Rosette
Showmanship Reserve Champion \$10.00 and Rosette

4-H YOUTH RABBIT AND CAVY EXHIBITS

Fair Event Coordinator: Jennifer Bearden, 689-5850
Entry Deadline: October 3, 2011
Arrival Time: October 24, 2011, 4:00-7:00 p.m.
Showmanship: October 27, following poultry showmanship
Remove Exhibits: Sunday, October 30, 2011, after 6 p.m.
Entry Fee: None



RULES AND REGULATIONS:

1. This exhibit is open to bona fide 4-H youth who have reached their 5th birthday by September 1 of the current year and not passed their 18th birthday or graduated from high school
2. Rabbits and cavy must be 8 weeks of age or older, well-groomed and clean.
3. No diseased or parasitic animals will be allowed to enter the show. All animals will be inspected.
4. The Fair will not be responsible for animals after 4:00 p.m. Monday, October 31, 2011. Animals can be removed after 6 p.m. on Sunday, October 30, 2011.
5. Maximum of five entries per youth.
6. All Exhibitors are responsible for hosting the 4-H Barn during the fair week. Length of shift will be determined by the barn superintendent at fair-time. Length of shift depends on the number of exhibitors participating in the county fair.
7. Rabbit Showmanship is open to any 4-H member with a rabbit exhibit at the Northwest Florida Fair. It is best to wear long sleeved shirts or show coats. Basis for judging: showmanship is based on grooming and training of the rabbit, and the appearance and behavior of the exhibitor. Exhibitors are encouraged to present their rabbit to the judge. Presentation of the rabbit is up to the individual showman. Showmanship scores will be based on the criteria listed on the showmanship score sheet. The judge may or may not ask questions of the exhibitor at the close of the routine. The excellence of the rabbit is not considered in scoring.

EXHIBIT PREMIUMS

Division A - Rabbit - any breed or sex
Exhibitor will receive a \$5.00 premium and ribbon for each rabbit exhibited.



Division B - Cavy - any breed or sex

Exhibitor will receive a \$5.00 premium and ribbon for each cavy exhibited.

SHOWMANSHIP PREMIUMS

Youth 5-7 years old - will receive a ribbon and \$3.00 premium for participation.

Youth 8-10, 11-13, and 14-18 years old - will receive show premiums and a ribbon for first through fifth place awards.

1st Place - \$5.00 and Ribbon
2nd Place - \$4.00 and Ribbon
3rd Place - \$3.00 and Ribbon
4th Place - \$2.00 and Ribbon
5th Place - \$1.00 and Ribbon

Showmanship Champion \$15.00 and Rosette
Showmanship Reserve Champion \$10.00 and Rosette

OPEN YOUTH DAIRY GOAT & MARKET GOAT SHOW

Entry Deadline: October 3, 2011

Entry Fee: None

Arrival Time: October 25, 2011, 5:00 p.m. for check in

Dairy Goat Show: October 25, 2011, 5:30 p.m.

Market Meat Goat Show: October 25, 2011, 7:00 p.m. or

½ hour after Dairy Goat Show (Weighed-in and tagged at 6:30 p.m.)

(Shows are open to youth who reside in Okaloosa, Escambia, Holmes, Santa Rosa and Walton Counties.)

Goats or sheep presented for exhibition in Florida must be accompanied by an Official Certificate of Veterinary Inspection dated not more than 90 days prior to presentation. Goats must be accompanied by evidence of completion of the test requirements or certifications listed below.

Tuberculosis - All goats over six months of age must have a negative tuberculin test within 90 days prior to exhibition or must originate from an Accredited Tuberculosis-Free Herd, as defined in rule 5C- 7.016(1), Florida Administrative Code. When accredited, the accredited herd number must be recorded on the Official Certificate of Veterinary Inspection.

Brucellosis - All goats over six months of age must be negative to a brucellosis test within 90 days prior to exhibition or must originate from a Certified Brucellosis-Free Herd. A Certified Brucellosis-Free Goat Herd is a herd which meets the requirements for a Certified Brucellosis-Free Herd as set forth in 5C-6.002, Florida Administrative Code. When certified, the certified herd number must be recorded on the Official Certificate of Veterinary Inspection.

Specific Authority 5C-4.005 FS

Dairy Goat Rules and Regulations:

1. All Dairy goat shows will use ADGA rules. Official registration is required on show animals over 6 months of age.
2. All animals shall have a negative TB and Brucellosis test within 90 days and an official health certificate within 90 days.
3. Youth exhibitors must have reached their 8th birthday by September 1 of the current year and not passed their 18th birthday or graduated from high school.

4. Goats must have been owned and in possession of youth exhibitor for 60 days prior to the date of the show.
5. All animals must be dehorned.
6. Exhibitors must be clean and neat and dressed in long pants or skirt with solid white dress shirt or blouse. Closed toe shoes are required.

Division A: Dairy Goat Showmanship Contest

- Class 1: 8-10 years
- Class 2: 11-12 years
- Class 3: 13-15 years
- Class 4: 16-18 years

Premium Schedule

- 1st - \$30.00
- 2nd - \$25.00
- 3rd - \$20.00
- 4th - \$15.00
- 5th - \$10.00
- Grand Showman – \$20.00 and Plaque
- Reserve Showman - \$10.00 and Rosette

Division B: Youth Dairy Goat Show

- Class 1 - Junior Doelings 6-12 months
- Class 2 - Junior Doelings 12-24 months
- Class 3 - Senior Milkers 2-3 years old
- Class 4 - Senior Milkers 4 years and over

Premium Schedule

- 1st - \$20.00
- 2nd - \$17.00
- 3rd - \$15.00
- 4th - \$10.00
- 5th - \$5.00
- Grand Junior Doe - \$15.00 and Plaque
- Reserve Junior Doe - \$10.00 and Rosette
- Grand Senior Doe - \$15.00 and Plaque
- Reserve Senior Doe - \$10.00 and Rosette

Meat Goat Rules and Regulations:

1. Commercial goats will be weighed and tagged with a show number at 6:30 p.m., October 25, 2011.
2. Youth exhibitors must have reached their 8th birthday by September 1 of the current year and not passed their 18th birthday or graduated from high school.
3. All goats must be carrying all milk teeth at weigh-in.
4. All goats must be dehorned or have horns tipped.
5. All goats must have I.D. – scrapie tags where applicable.
6. Showmanship goats must be owned by exhibitor for at least 60 days prior to show.
7. Exhibitors must be clean and neat and dressed in long pants or skirt with a solid white dress shirt or blouse. Closed toe shoes are required.

Division C: Youth Meat Goat Showmanship Contest

- Class 1: 8-10 years
- Class 2: 11-12 years
- Class 3: 13-15 years

Class 4: 16-18 years

Premium Schedule

1st - \$30.00

2nd - \$25.00

3rd - \$20.00

4th - \$15.00

5th - \$10.00

Grand Champion = \$20.00 and Plaque

Reserve Champion - \$10.00 and Rosette

Division D: Commercial Meat Goats

Class 1 – Weight I

Class 2 – Weight II

Class 3 – Weight III

Premium Schedule

1st - \$20.00

2nd - \$17.00

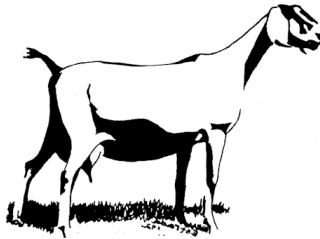
3rd - \$15.00

4th - \$10.00

5th - \$5.00

Grand Champion - \$20.00 and Plaque

Reserve Champion - \$10.00 and Rosette



Cattle Showmanship Clinic

Entry Deadline: October 3, 2011

Entry Fee: None

Arrival Time: October 29, 2011, 3:00 p.m. for check in

Showmanship Clinic: October 29, 2011, 3:30 p.m.

(Open to youth who reside in Okaloosa, Escambia, Holmes, Santa Rosa and Walton Counties.)

All livestock for exhibition in Florida must be covered by an official health certificate issued by an accredited veterinarian. All health certificates for cattle must show detailed record of tests for each animal, giving breed, date of test, name and registry number, tattoo or ear tag number, and brand letters or numbers, and, if from a Tuberculosis Accredited herd or Brucellosis Certified herd, give accredited or certified herd number.

5C-4.02 CATTLE

Cattle consigned for exhibition must be covered by health certificate and must meet the following requirements:

(1) TUBERCULOSIS

A. Cattle may be entered for exhibition without tuberculin test provided they are identified on health certificates as originating in Accredited Tuberculosis Free herds or herds not under quarantine in Modified Accredited Tuberculosis Free areas.

B. Cattle which do not qualify under Subsection A above may enter for exhibition provided they were negative to tuberculin test within thirty (30) days of the date of exhibition. If any animals in the tested react, the remaining animals will be eligible for entry.

C. Tuberculin test is not required on steers entered in Fat Stock shows where only steers are shown.

(2) BRUCELLOSIS

A. Cattle may be entered for exhibition without brucellosis test provided they are identified on health certificate as originating in Certified Brucellosis- Free herds of Class Free areas.

B. Cattle from herds not under quarantine in Class A or Class B areas may be entered for exhibition if negative to brucellosis test with thirty days prior to entry into the fair or show. Cattle from such herds which are under 18 months of age, and official calf vaccinates under 24 months of age (Beef) and 20 months of age (Dairy) and which are not parturient or post parturient, are exempt from the test requirement.

C. Cattle from Class C areas which do not qualify under subsection A above may be entered for exhibition provided they originate from herds which are not under quarantine and which have been have been subjected to official brucellosis testing within (12) months prior to the date of the exhibition and the animals to be entered are:

1. 1. Under 18 months of age; or
2. 2. Official calf vaccinates over 20 months of age (Dairy), or 24 months of age (Beef) ; or
3. 3. Official calf vaccinates over 20 months of age (Dairy), or 24 months of age (Beef), and have had a negative official brucellosis test within thirty (30) days prior to the date of the exhibition and such test was not less than sixty (60) days after the qualifying herd test; or
4. 4. Non-vaccinated cattle over 18 months of age and have had a negative official brucellosis test within thirty (30) days prior to the date of the exhibition and such test was not less than sixty (60) days after the qualifying herd test.